

## Technical Parameter

Type	KSCAN20	KSCAN20-PB	KSCAN20-EG	KSCAN20-PBEG	
Red laser	7 laser crosses + 1 extra laser				
Blue laser	5 parallel laser lines				
Resolution	0.01mm	0.01mm	0.01mm	0.01mm	
Accuracy	0.02mm	0.02mm	0.02mm	0.02mm	
Build-in photogrammetry	✓	✓	✓	✓	
Volumetric accuracy	0.035mm/m	0.035mm/m	0.035mm/m	0.035mm/m	
Scanning area	up to 550x600mm				
Depth of field	up to 550mm				
Stand-off distance	200-420mm				
Laser class	CLASS II (eye-safe)				
Measurement rate	650000 measures/s	650000 measures/s	650000 measures/s	650000 measures/s	
Probing	Function module	-	✓	-	✓
	Single point repeatability	-	0.03mm	-	0.03mm
Intelligent edge inspection	Function module	-	-	✓	✓
	Edge accuracy	-	-	0.03mm	0.03mm
Pipe inspection	optional	optional	optional	optional	
High-precision reference bar	Function module	optional	optional	optional	optional
	Volumetric accuracy	0.02mm/m	0.02mm/m	0.02mm/m	0.02mm/m
Output formats	.ply, .obj, .igs, .stl, .stp, .fbx, .wrl, .xyz, .dae, .ma, .asc, (customizable)				

**SCANTECH**  
3D Digitization Expert

**KSCAN**  
**3D SCANNER**

Dual Laser mode

Photogrammetry

Probing



İLETİŞİM  
Üçevler Mahallesi Ertuğrul Caddesi Nar plaza  
No:89 Kat:3 Daire:5 16270 Nilüfer/BURSA  
0 224 970 04 76  
90 533 643 33 20  
info@ofems.com

Hangzhou Scantech Co.,Ltd





### Unlimited Measuring Range

KSCAN has built-in photogrammetry system. The accuracy reaches 0.02mm and the volumetric accuracy is up to 0.035mm/m. It can individually achieve high accurate 3D measurement range from 0.02m to 10m.



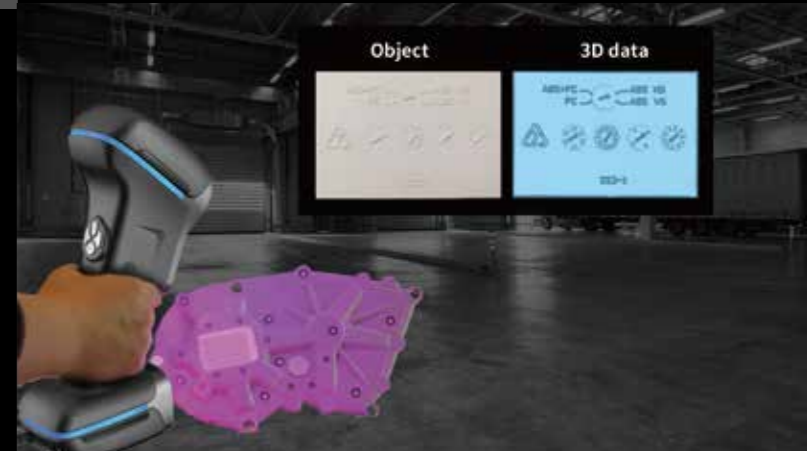
### Probing

KSCAN can quickly obtain accurate 3D data with probing and satisfy strict measuring requirements.



### Incomparable Resolution

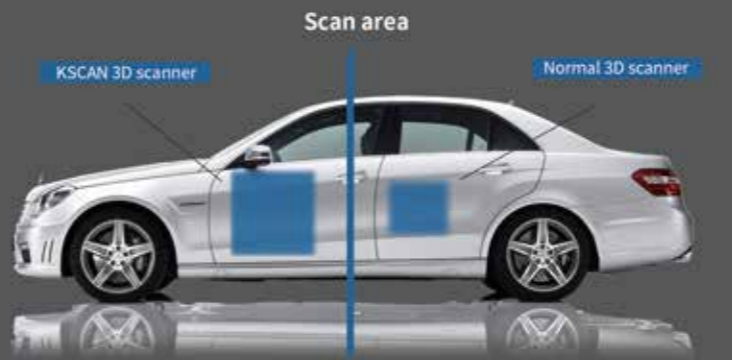
Dual laser scan mode are freely switched. Ultra-high resolution easily captures the texture data of a coin. The resolution is up to 10µm.



# KSCAN

KSCAN 3D Scanner integrates photogrammetry function and dual laser scan mode which are global initiative technologies. The built-in photogrammetry function greatly expands the scan area and improves volumetric accuracy. KSCAN combines high efficiency and ultra-detail benefitting from dual laser scan mode. Moreover, KSCAN offers practical solutions targeting at objects range from 0.02m to 10m.

KSCAN supports probing that can correctly acquire the 3D data of hole, plane, edge, etc. KSCAN can fulfill different measurements and analysis functions such as pipe measurement, deformation detection and 3D inspection with 3D software---ScanViewer, which conducts effective, reliable and full-scale 3D measurement technologies for product design and inspection professionals.



### Higher Efficiency

KSCAN upgrades in speed and scan area, which greatly reduces cost of device, time and labor.



High volumetric accuracy



Probing



Resolution Up to 10µm



Edge inspection

### Multi-functional 3D Software

KSCAN can work with ScanViewer to fulfill different inspection functions such as pipe measurement, deformation detection and GD&T.

